

floor & mezzanine plan keynotes

- 1 LINE OF EXISTING CANOPY ABOVE
- 2 LINE OF MEZZANINE PERIMETER ABOVE
- 3 EXISTING CONCRETE FLOORS TO REMAIN
- 4 EXISTING CORRUGATED STEEL CANOPY TO REMAIN, PTD, TYP.
- 5 NEW PLYWOOD OR ORIENTED STRAND BOARD DECKING THROUGHOUT
- 6 10 MM BLUE POLY GAL FASTENED TO METAL STUDS BOTH SIDES W/ STAINED WOOD CAP, TYP. GUARDRAIL
- 7 3/4" WHITE MELAMINE MILLWORK, TYP.
- 8 2X WOOD STAIR STRINGERS, TREADS & RISERS
- 9 WOOD HANDRAIL ON PTD, STEEL BRACKETS
- 10 WHITE PLASTIC LAMINATE OVER PARTICLE BOARD W/ MATCHING EDGE BAND COUNTERTOP ON WHITE RAKKS TYPE 'EH' STEEL SUPPORTS, TYP.
- 11 3/4" PLYWOOD SHELVES W/ 1 1/2" WOOD NOSING, PTD., TYP. W/ S.S. ROD IF SHOWN
- 12 2-TIER 12" X 15" X 36" STEEL LOCKERS, HALLOWELL OR SIMILAR
- 13 NEW EXTERIOR ENTRY DECK CONSISTS OF PT 2X6 WOOD DECKING & STAIRS ON PT WOOD FRAMING, 1X6 WOOD SLAT GUARDRAIL
- 14 SEATING MADE OF WOOD FRAMED BOXES FINISHED IN ORIENTED STRAND BOARD W/ CLEAR MATTE VARNISH
- 15 FABRIC CURTAIN ON S.S. ROD IN FRONT OF 3/4" PLYWOOD SHELVES W/ 1 1/2" WOOD NOSING, PTD., TYP.
- 16 SOLID SURFACE COUNTERTOP, WRAP DOWN SIDES
- 17 TOILET PARTITIONS, PTD.
- 18 PLAS-TEX POLY WALL PLASTIC WALL COVERING
- 19 5/8" ORIENTED STRAND BOARD W/ CLEAR MATTE VARNISH OVER METAL STUDS W/ STAINED WOOD CAP GUARDRAIL
- 20 EXISTING STEEL RAMP TO REMAIN
- 21 EXISTING STEEL STAIRS TO REMAIN, PTD, TYP.
- 22 NEW ACCESSIBLE LIFT

wall type legend

- EXISTING 8" CMU WALL TO REMAIN, FILL WITH INSULATION AND PAINT, TYP.
- EXISTING STUD WALL W/ GYPSUM BOARD BOTH SIDES TO REMAIN, PAINTED, TYP.
- NEW WOOD STUD WALL W/ 5/8" GYPSUM BOARD BOTH SIDES, PAINTED, TYP. INSULATED WHERE INDICATED
- NEW 6" METAL STUD WALL W/ 10 MM BLUE POLY GAL ON ONE SIDE AS INDICATED, TYP.

CLIENT / OWNER
**REAL THREAD
DRU DALTON**
407.479.7210

GENERAL CONTRACTOR
**THE HAGEDORN GROUP
CRAIG HAGEDORN**
407.366.8488

CUBES
 CUBE design + research, LLC | 1/1 617.848.2602
 30 Newland Street 4th Floor, Boston MA 02111 | www.cubedesigndesign.com

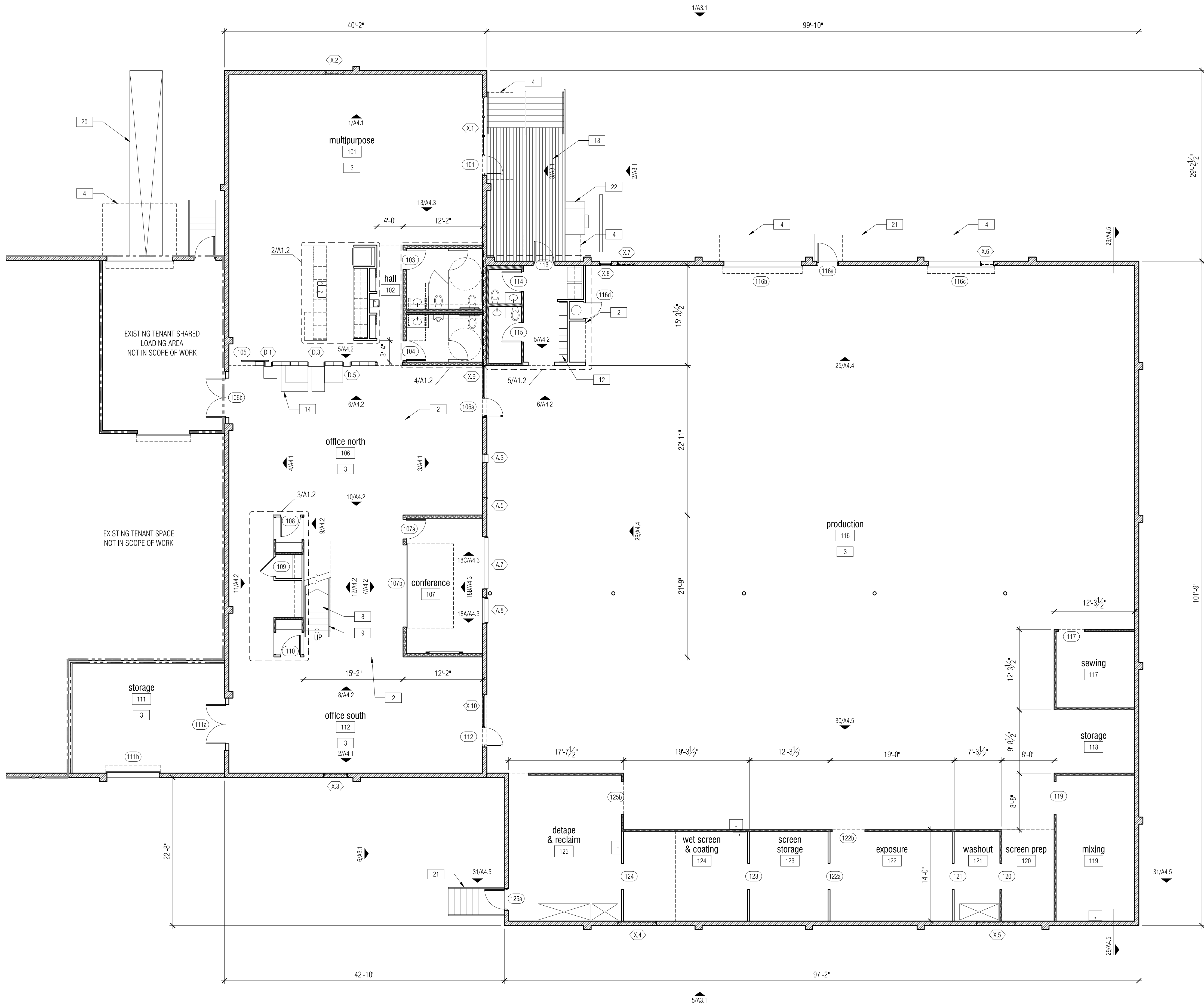
PERMIT SET 13.06.07
PRICING SET 13.04.12
DESIGN PROGRESS 13.03.22
ISSUE DATE

NOT FOR CONSTRUCTION

SCALE AS NOTED DATE DRAWN 13.03.22

FIRST FLOOR PLAN

A1.1



1 FIRST FLOOR PLAN
1/8" = 1'-0"

floor & mezzanine plan keynotes

- 1 LINE OF EXISTING CANOPY ABOVE
- 2 LINE OF MEZZANINE PERIMETER ABOVE
- 3 EXISTING CONCRETE FLOORS TO REMAIN
- 4 EXISTING CORRUGATED STEEL CANOPY TO REMAIN, PTD, TYP.
- 5 NEW PLYWOOD OR ORIENTED STRAND BOARD DECKING THROUGHOUT
- 6 10 MM BLUE POLYGAL FASTENED TO METAL STUDS BOTH SIDES W/ STAINED WOOD CAP, TYP. GUARDRAIL
- 7 3/4" WHITE MELAMINE MILLWORK, TYP.
- 8 2X WOOD STAIR STRINGERS, TREADS & RISERS
- 9 WOOD HANDRAIL ON PTD. STEEL BRACKETS
- 10 WHITE PLASTIC LAMINATE OVER PARTICLE BOARD W/ MATCHING EDGE BAND COUNTERTOP ON WHITE RAKKS TYPE EH STEEL SUPPORTS, TYP.
- 11 3/4" PLYWOOD SHELVES W/ 1 1/2" WOOD NOSING, PTD., TYP. W/ S.S. ROD IF SHOWN
- 12 2-TIER 12" X 15" X 36" STEEL LOCKERS, HALLOWELL OR SIMILAR
- 13 NEW EXTERIOR ENTRY DECK CONSISTS OF PT 2X6 WOOD DECKING & STAIRS ON PT WOOD FRAMING, 1X6 WOOD SLAT GUARDRAIL
- 14 SEATING MADE OF WOOD FRAMED BOXES FINISHED IN ORIENTED STRAND BOARD W/ CLEAR MATTE VARNISH
- 15 FABRIC CURTAIN ON S.S. ROD IN FRONT OF 3/4" PLYWOOD SHELVES W/ 1 1/2" WOOD NOSING, PTD., TYP.
- 16 SOLID SURFACE COUNTERTOP, WRAP DOWN SIDES
- 17 TOILET PARTITIONS, PTD.
- 18 PLAS-TEX POLYWALL PLASTIC WALL COVERING
- 19 5/8" ORIENTED STRAND BOARD W/ CLEAR MATTE VARNISH OVER METAL STUDS W/ STAINED WOOD CAP GUARDRAIL
- 20 EXISTING STEEL RAMP TO REMAIN
- 21 EXISTING STEEL STAIRS TO REMAIN, PTD. TYP.
- 22 NEW ACCESSIBLE LIFT

wall type legend

- EXISTING 8" CMU WALL TO REMAIN, FILL WITH INSULATION AND PAINT, TYP.
- EXISTING STUD WALL W/ GYPSUM BOARD BOTH SIDES TO REMAIN, PAINTED, TYP.
- NEW WOOD STUD WALL W/ 5/8" GYPSUM BOARD BOTH SIDES, PAINTED, TYP. INSULATED WHERE INDICATED
- NEW 6" METAL STUD WALL W/ 10 MM BLUE POLYGAL ON ONE SIDE AS INDICATED, TYP.

CLIENT / OWNER
**REAL THREAD
DRU DALTON**
407.479.7210

GENERAL CONTRACTOR
**THE HAGEDORN GROUP
CRAIG HAGEDORN**
407.366.8488

CUB E

CUB E design + research, LLC | 1/11 617.848.2602
30 Hesselwood Street 4th Floor, Boston MA 02111 | www.cubedesigndesign.com

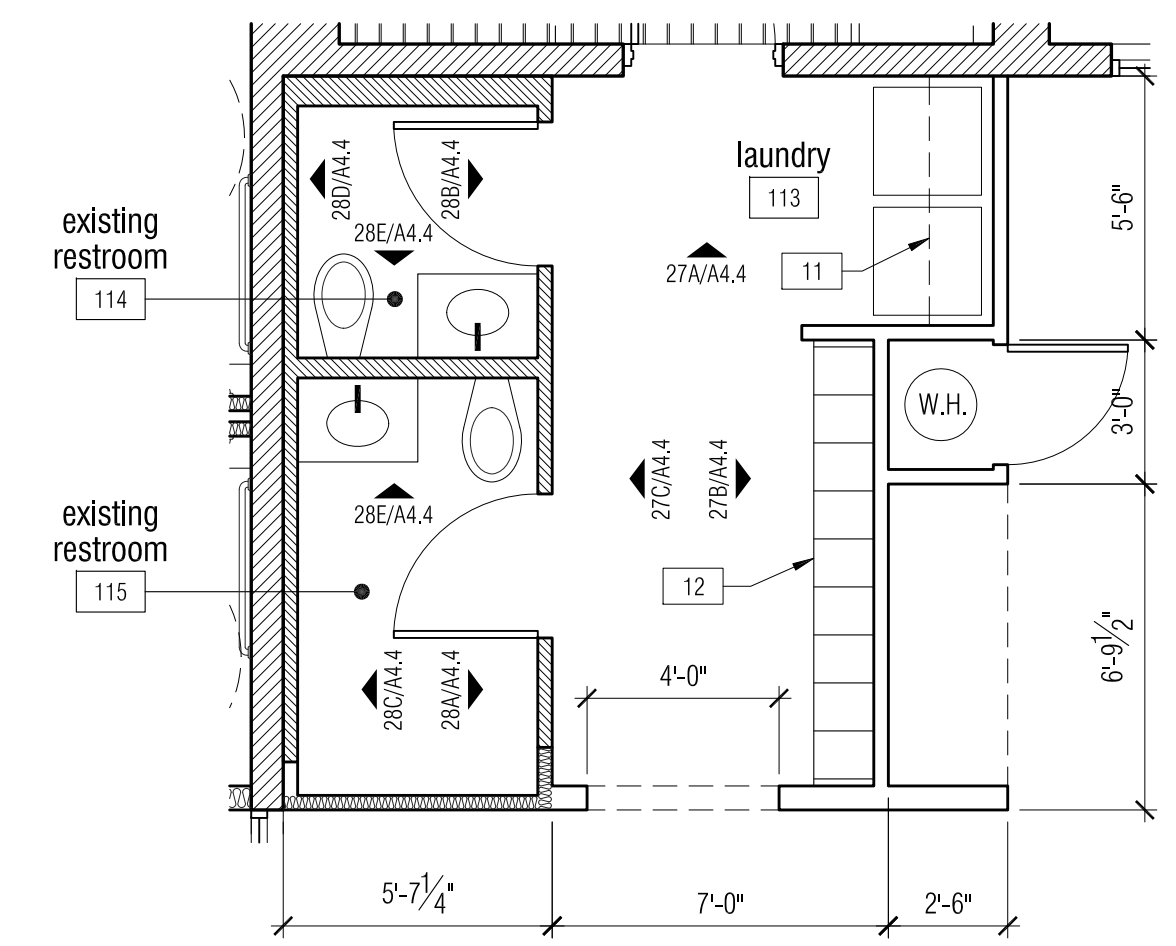
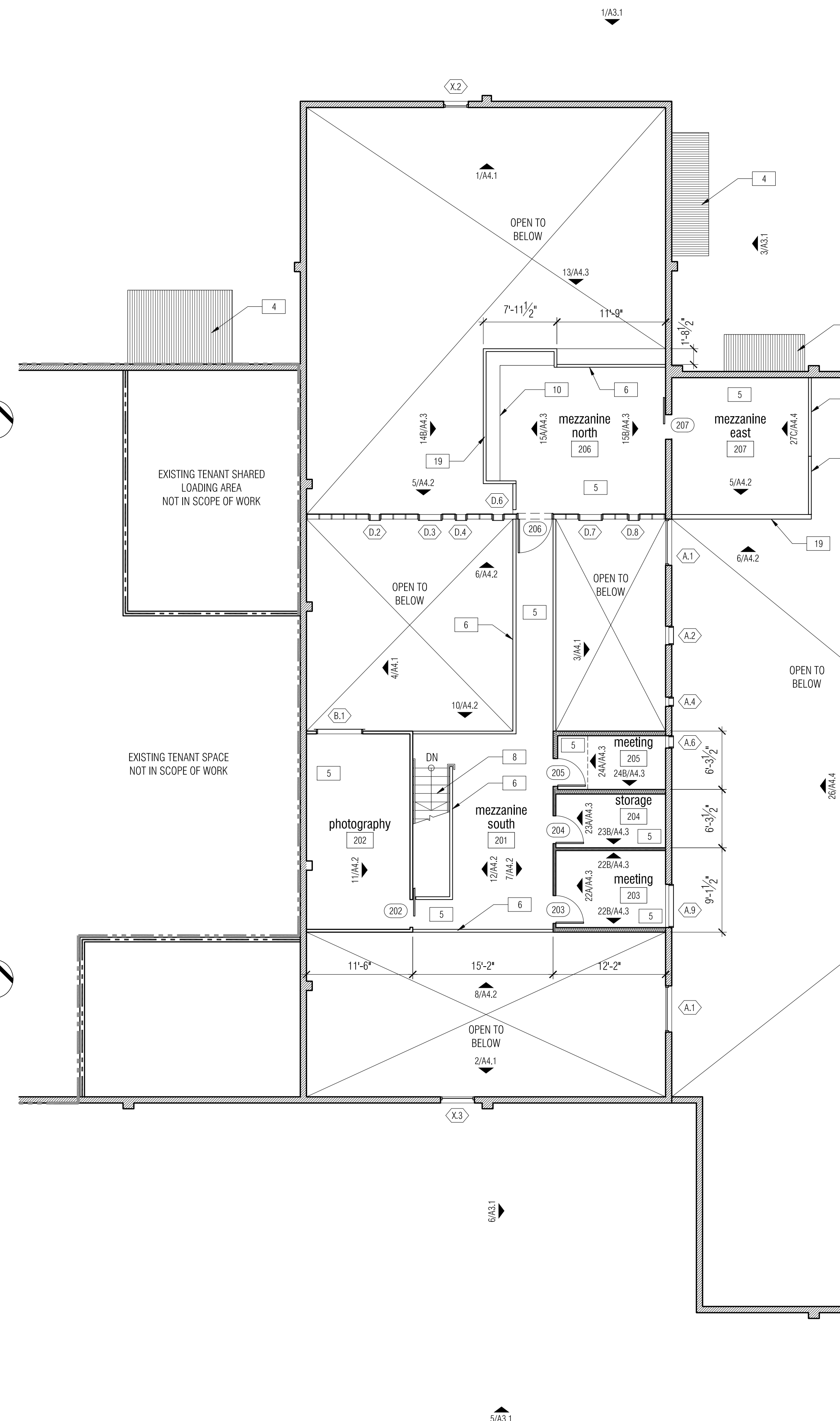
PERMIT SET 13.06.07
PRICING SET 13.04.12
DESIGN PROGRESS 13.03.22
ISSUE DATE

NOT FOR CONSTRUCTION

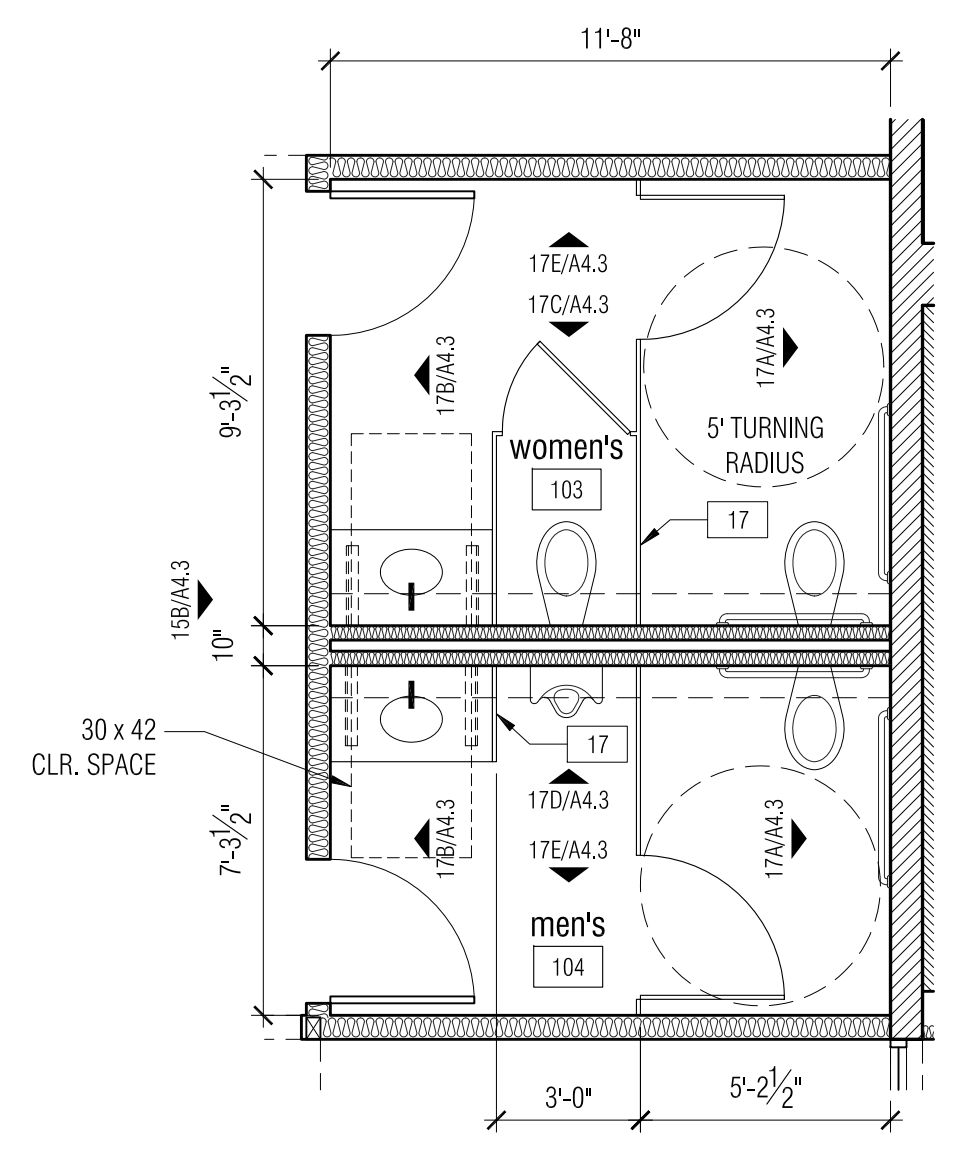
SCALE AS NOTED DATE DRAWN 13.03.22

MEZZANINE &
ENLARGED PLANS

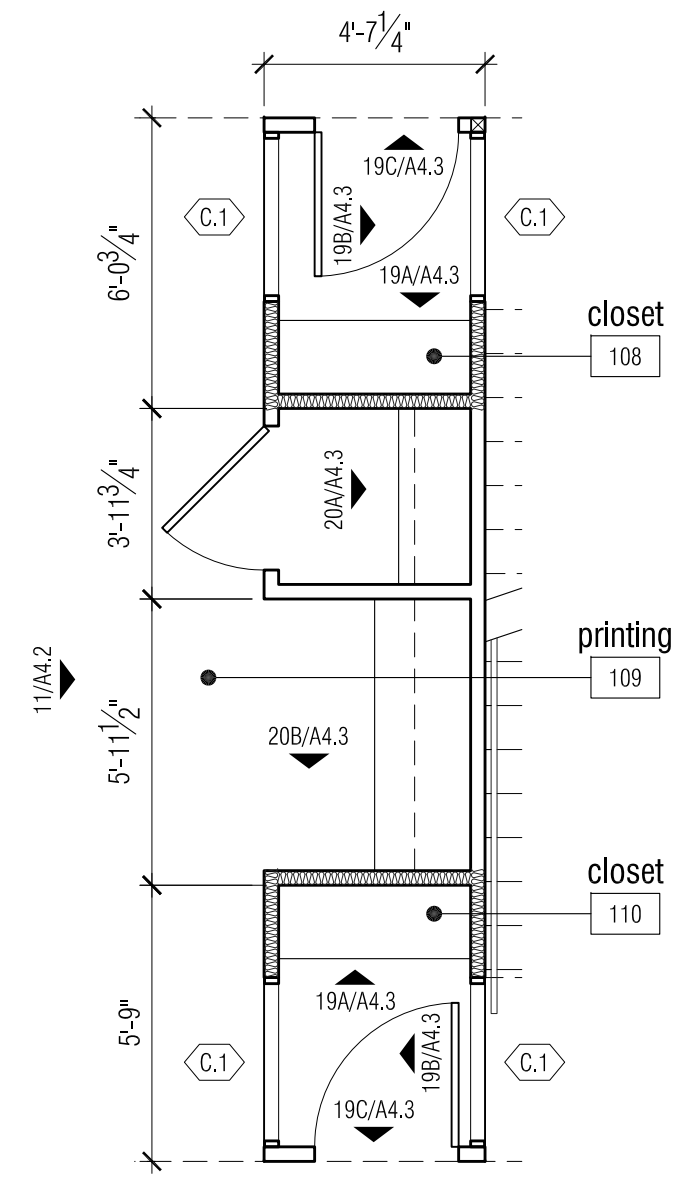
A1.2



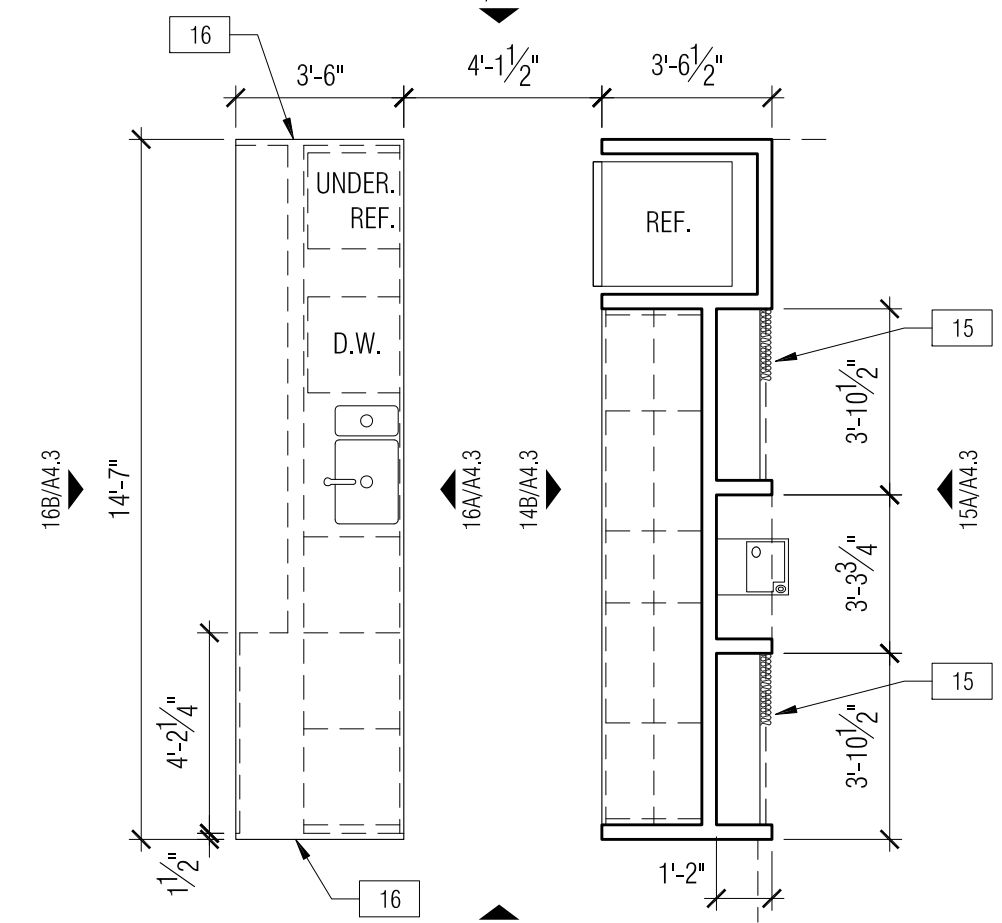
5 ENLARGED LAUNDRY & EXISTING RESTROOM PLAN
1/4" = 1'-0"



4 ENLARGED NEW RESTROOM PLAN
1/4" = 1'-0"

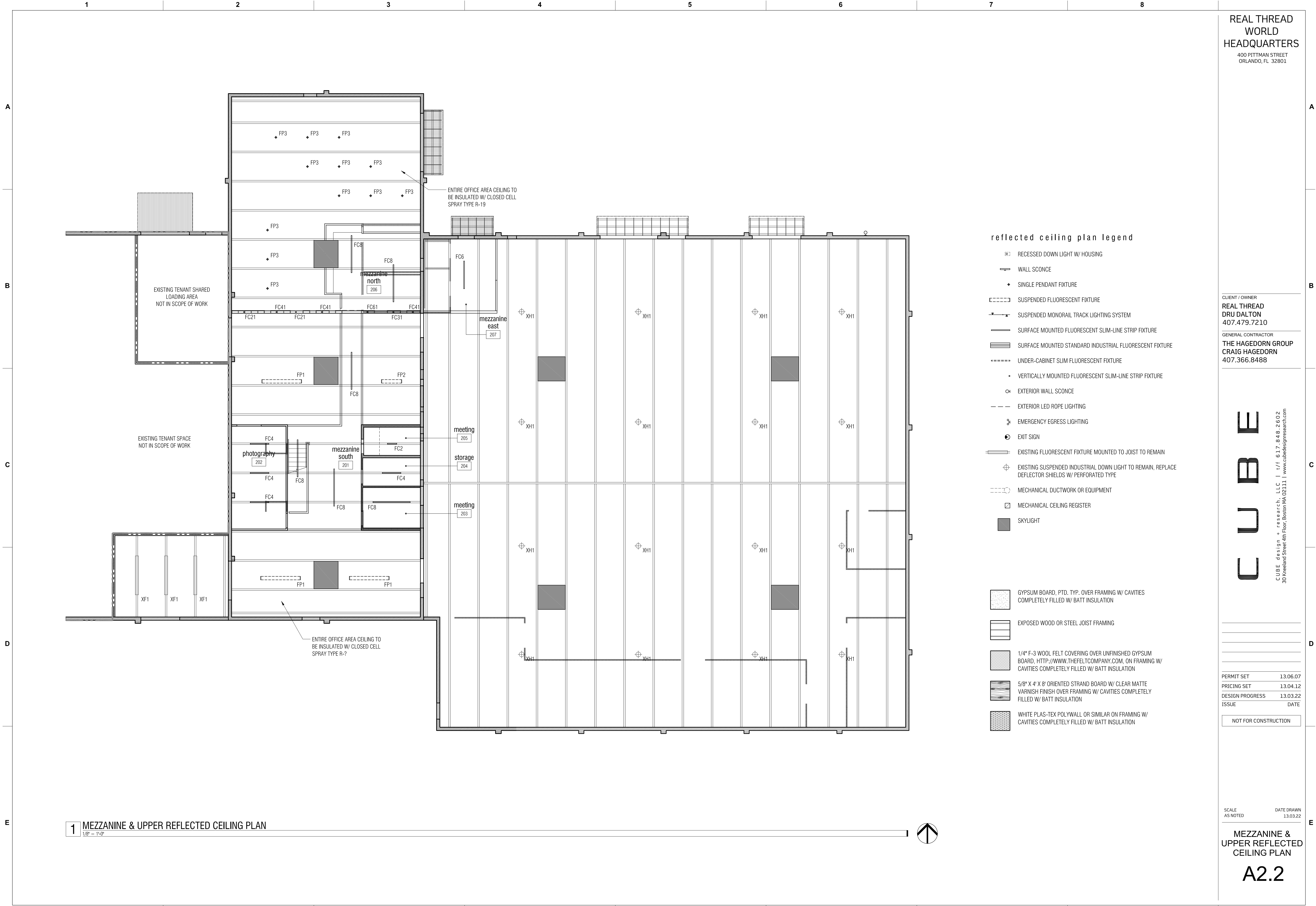


3 ENLARGED PRINT AREA & CLOSET PLAN
1/4" = 1'-0"



2 ENLARGED BREAKROOM PLAN
1/4" = 1'-0"

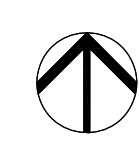
1 MEZZANINE PLAN
1/8" = 1'-0"

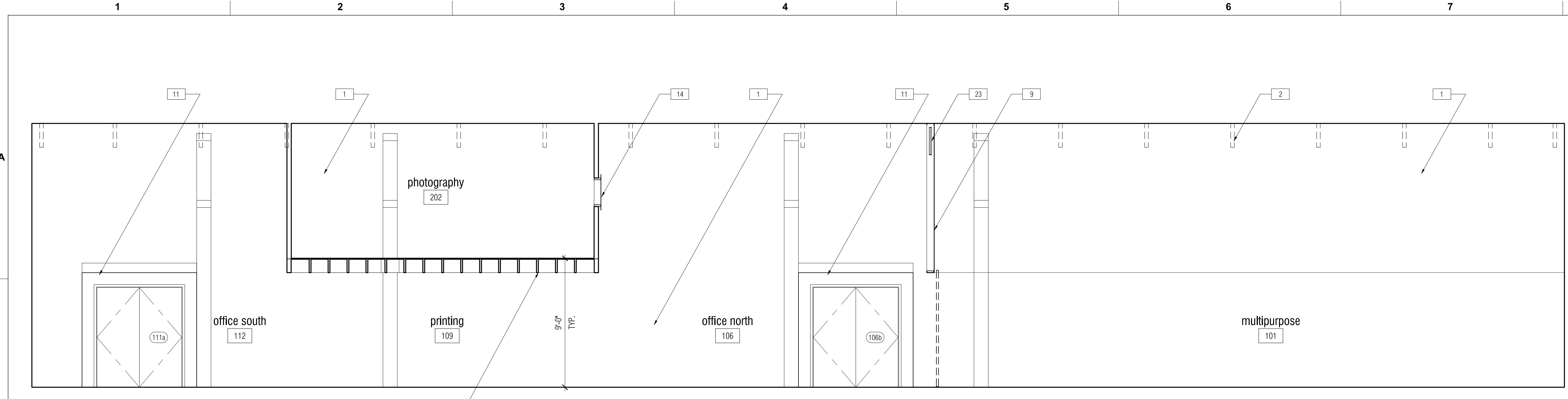


reflected ceiling plan legend

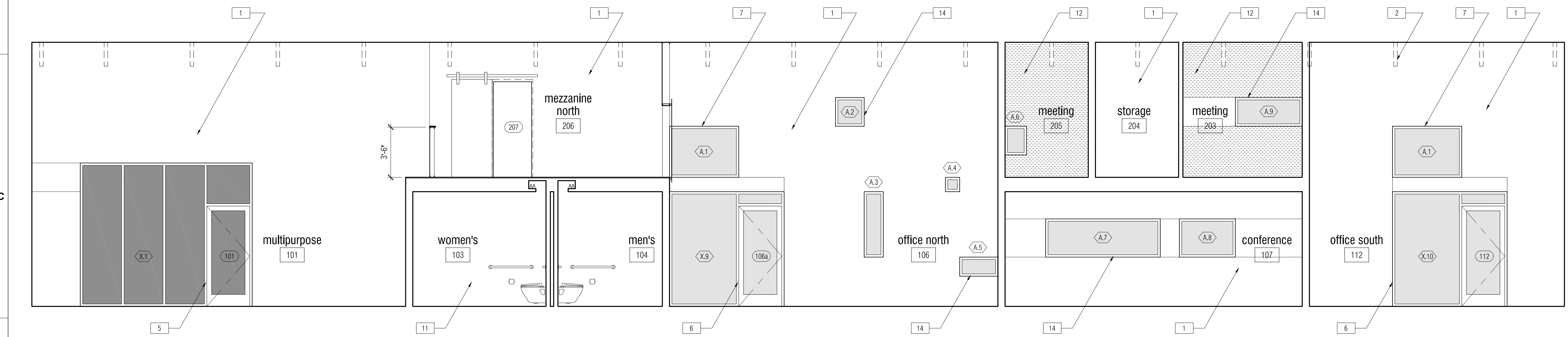
- RECESSED DOWN LIGHT W/ HOUSING
- WALL SCONCE
- SINGLE PENDANT FIXTURE
- SUSPENDED FLUORESCENT FIXTURE
- SUSPENDED MONORAIL TRACK LIGHTING SYSTEM
- SURFACE MOUNTED FLUORESCENT SLIM-LINE STRIP FIXTURE
- SURFACE MOUNTED STANDARD INDUSTRIAL FLUORESCENT FIXTURE
- UNDER-CABINET SLIM FLUORESCENT FIXTURE
- VERTICALLY MOUNTED FLUORESCENT SLIM-LINE STRIP FIXTURE
- EXTERIOR WALL SCONCE
- EXTERIOR LED ROPE LIGHTING
- EMERGENCY EGRESS LIGHTING
- EXIT SIGN
- EXISTING FLUORESCENT FIXTURE MOUNTED TO JOIST TO REMAIN
- EXISTING SUSPENDED INDUSTRIAL DOWN LIGHT TO REMAIN, REPLACE DEFLECTOR SHIELDS W/ PERFORATED TYPE
- MECHANICAL DUCTWORK OR EQUIPMENT
- MECHANICAL CEILING REGISTER
- SKYLIGHT
- GYPSUM BOARD, PTD. TYP. OVER FRAMING W/ CAVITIES COMPLETELY FILLED W/ BATT INSULATION
- EXPOSED WOOD OR STEEL JOIST FRAMING
- 1/4" F-3 WOOL FELT COVERING OVER UNFINISHED GYPSUM BOARD, HTTP://WWW.THEFELTCOMPANY.COM. ON FRAMING W/ CAVITIES COMPLETELY FILLED W/ BATT INSULATION
- 5/8" X 4" X 8" ORIENTED STRAND BOARD W/ CLEAR MATTE VARNISH FINISH OVER FRAMING W/ CAVITIES COMPLETELY FILLED W/ BATT INSULATION
- WHITE PLAS-TEX POLYWALL OR SIMILAR ON FRAMING W/ CAVITIES COMPLETELY FILLED W/ BATT INSULATION

1 MEZZANINE & UPPER REFLECTED CEILING PLAN
1/8" = 1'-0"

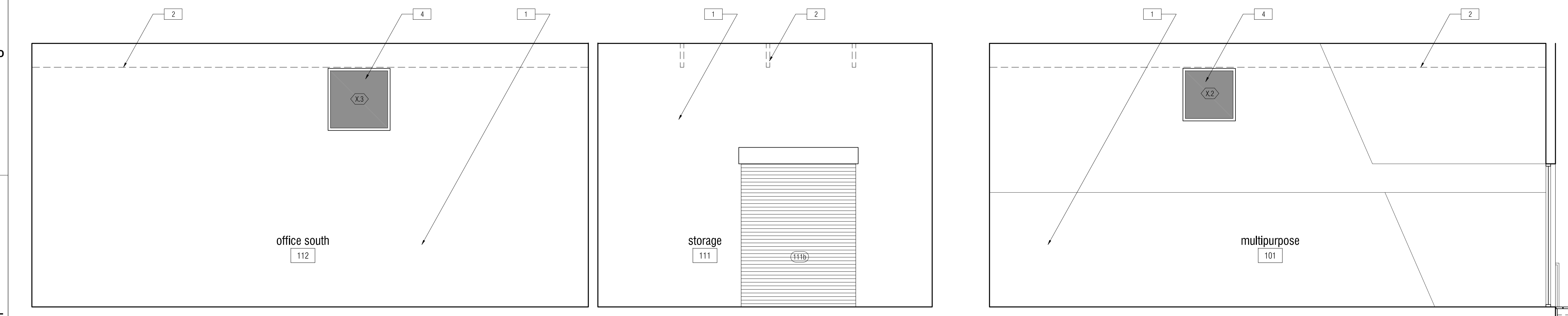




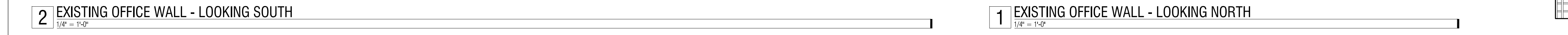
4 EXISTING OFFICE WALL - LOOKING WEST
1/4" = 1'-0"



3 EXISTING OFFICE WALL - LOOKING EAST
1/4" = 1'-0"



2 EXISTING OFFICE WALL - LOOKING SOUTH
1/4" = 1'-0"



1 EXISTING OFFICE WALL - LOOKING NORTH
1/4" = 1'-0"

interior elevation keynotes

- 1 EXISTING CMU OR STUD WALL TO REMAIN PTD., TYP.
- 2 EXISTING STEEL JOIST PTD., TYP.
- 3 EXISTING LOUVERED WINDOW W/ FAN TO REMAIN; CLEAN & REPAIR AS NECESSARY
- 4 NEW CLR. ANODIZED ALUM. LOW-E DUAL-GLAZED WINDOW TO REPLACE EXISTING LOUVER
- 5 NEW CLR. ANODIZED ALUM. STOREFRONT ENTRY LOW-E DUAL-GLAZED TO REPLACE EXIST. ROLL-UP DOOR
- 6 NEW CLR. ANODIZED ALUM. STOREFRONT TEMPERED SINGLE-GLAZED TO REPLACE EXIST. ROLL-UP DOOR W/ INFILL HEADER
- 7 NEW CLR. ANODIZED ALUM. WINDOW, SINGLE-GLAZED
- 8 5/8" X 4" X 8" ORIENTED STRAND BOARD W/ CLEAR MATTE VARNISH FINISH
- 9 10 MM BLUE POLYGL FASTENED TO METAL STUDS ON ONE SIDE ONLY W/ SHEET METAL SCREWS
- 10 5/8" GYPSUM BOARD ON MTL. STUDS, PTD.
- 11 5/8" HIGH IMPACT MOISTURE RESISTANT GYPSUM BOARD ON MTL. STUDS, PTD.
- 12 1/4" F-3 WOOL FELT WALL COVERING OVER UNFINISHED GYP. BD. ON MTL. STUDS, <http://www.thefeltcompany.com>
- 13 10 MM BLUE POLYGL FASTENED TO METAL STUDS BOTH SIDES W/ STAINED WOOD CAP, TYP. GUARDRAIL
- 14 1/4" CLEAR LEXAN PANEL FASTENED TO 2X WOOD FRAME, TYP. OF INTERIOR WINDOWS U.N.O.
- 15 3/4" WHITE MELAMINE MILLWORK, TYP.
- 16 EXPOSED WOOD FRAMING
- 17 2X WOOD STAIR STRINGERS, TREADS & RISERS
- 18 WOOD HANDRAIL ON PTD. STEEL BRACKETS
- 19 WHITE PLASTIC LAMINATE OVER PARTICLE BOARD W/ MATCHING EDGE BAND COUNTERTOP ON WHITE RAKKS TYPE 'EH' STEEL SUPPORTS, TYP.
- 20 3/4" PLYWOOD SHELVES W/ 1 1/2" WOOD NOSING, PTD., TYP. W/ S.S. ROD IF SHOWN
- 21 14 GA. HOT-ROLLED SHEET METAL W/ CLEAR WAX FINISH ADHERED TO 3/4" PLYWOOD
- 22 2-TIER 12" X 15" X 36" STEEL LOCKERS, HALLOWELL OR SIMILAR
- 23 LOW PROFILE COMPACT Z-STRIP FLUORESCENT LIGHT FIXTURE, LITHONIA LIGHTING OR SIMILAR
- 24 NEW EXTERIOR ENTRY DECK CONSISTS OF PT 2X6 WOOD DECKING & STAIRS ON PT WOOD FRAMING, 1X6 WOOD SLAT GUARDRAIL
- 25 SEATING MADE OF WOOD FRAMED BOXES FINISHED IN ORIENTED STRAND BOARD W/ CLEAR MATTE VARNISH
- 26 FABRIC CURTAIN ON S.S. ROD IN FRONT OF 3/4" PLYWOOD SHELVES W/ 1 1/2" WOOD NOSING, PTD., TYP.
- 27 SOLID SURFACE COUNTERTOP, WRAP DOWN SIDES
- 28 TOILET PARTITIONS, PTD. W/ BLACK CHALKBOARD PAINT
- 29 PLAS-TEX POLYWALL PLASTIC WALL COVERING

**REAL THREAD
WORLD
HEADQUARTERS**
400 PITTMAN STREET
ORLANDO, FL 32801

CLIENT / OWNER
**REAL THREAD
DRU DALTON**
407.479.7210

GENERAL CONTRACTOR
**THE HAGEDORN GROUP
CRAIG HAGEDORN**
407.366.8488

CUBES
CUBE design + research, LLC | 1/1 617.848.2602
30 Newland Street, 4th Floor, Boston MA 02111 | www.cubedesignresearch.com

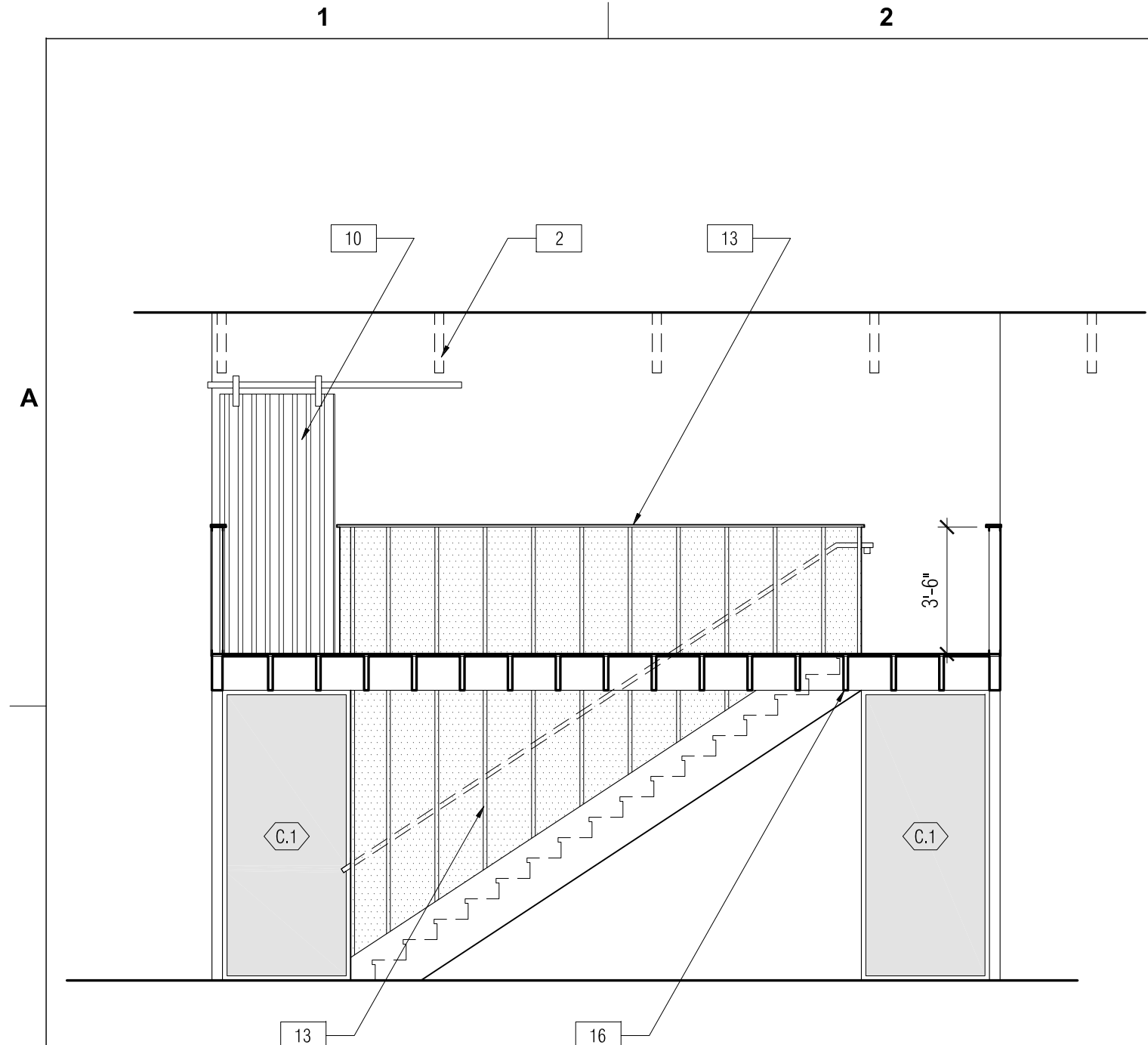
PERMIT SET	13.06.07
PRICING SET	13.04.12
DESIGN PROGRESS	13.03.22
ISSUE	DATE

NOT FOR CONSTRUCTION

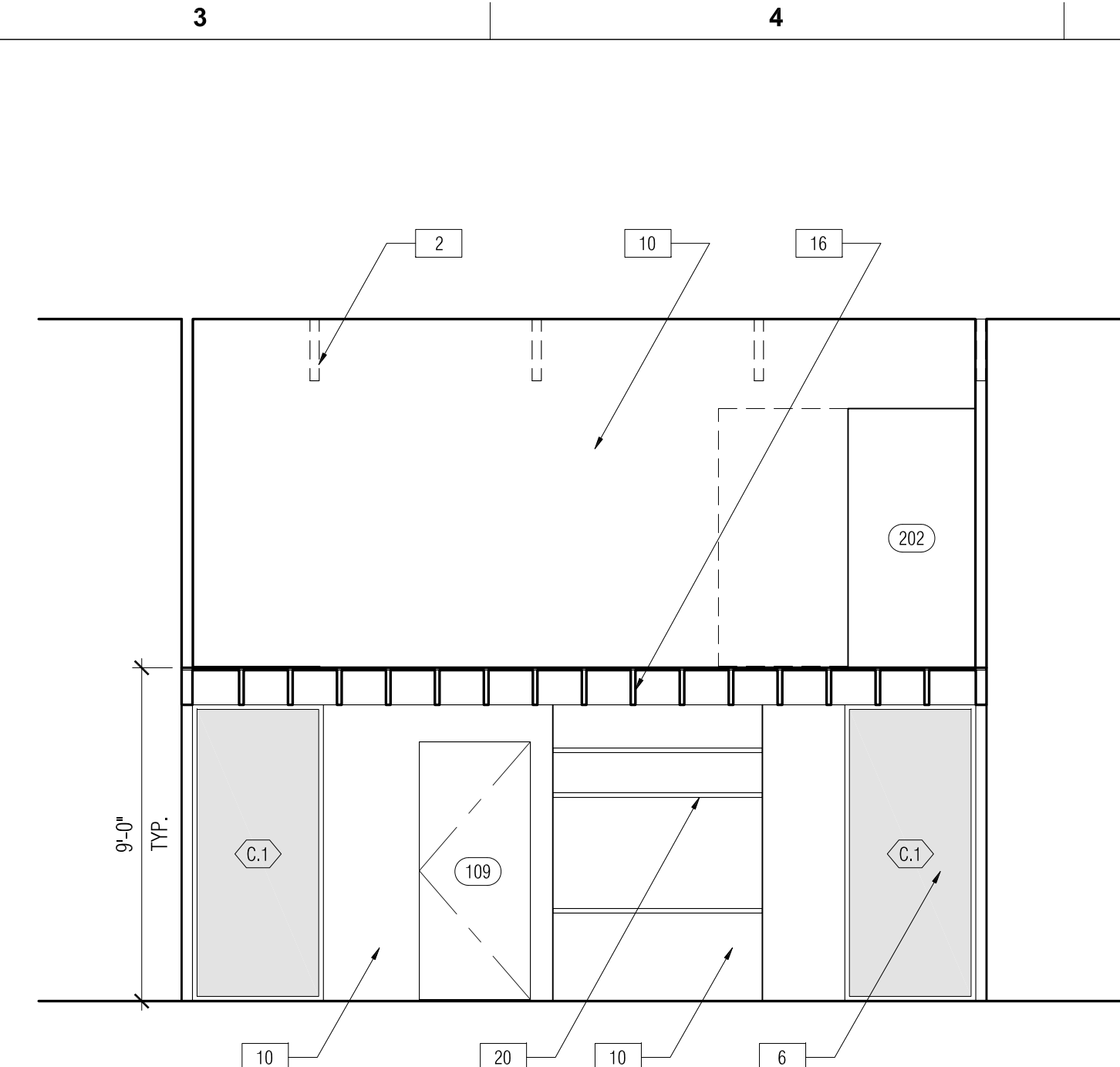
SCALE AS NOTED DATE DRAWN 13.03.22

**OFFICE - INTERIOR
ELEVATIONS**

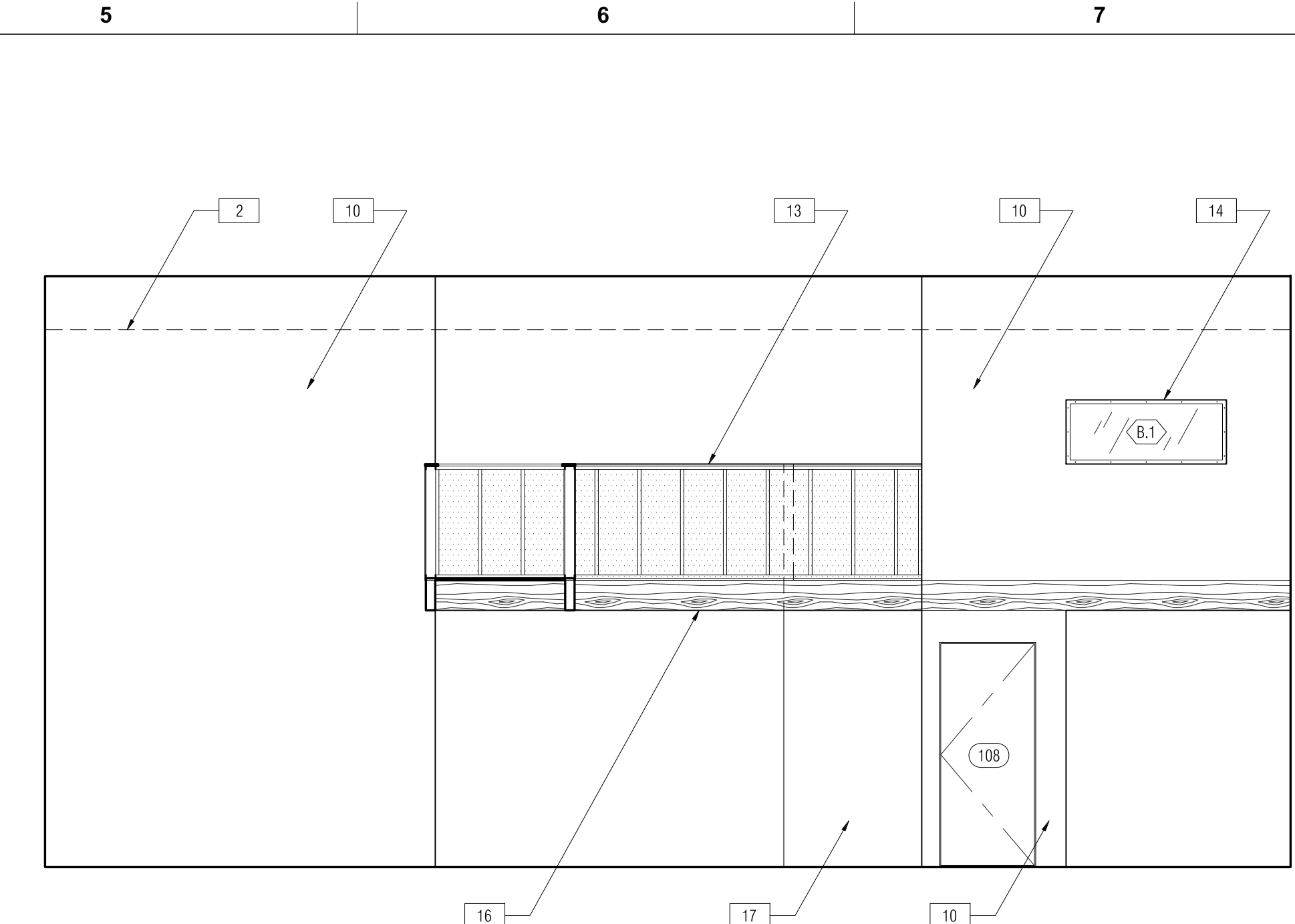
A4.1



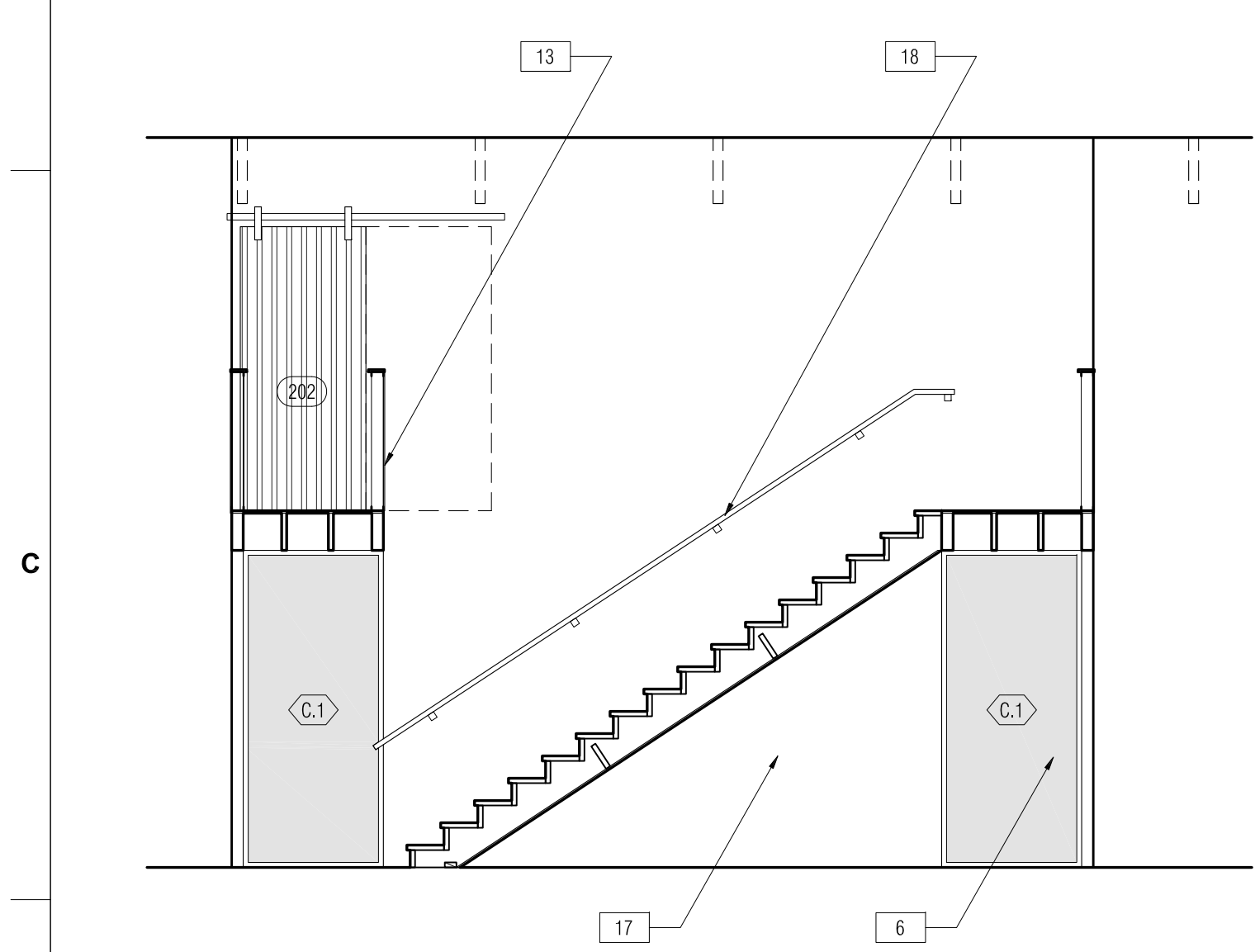
12 MEZZANINE SOUTH STAIR ELEVATION
1/4" = 1'-0"



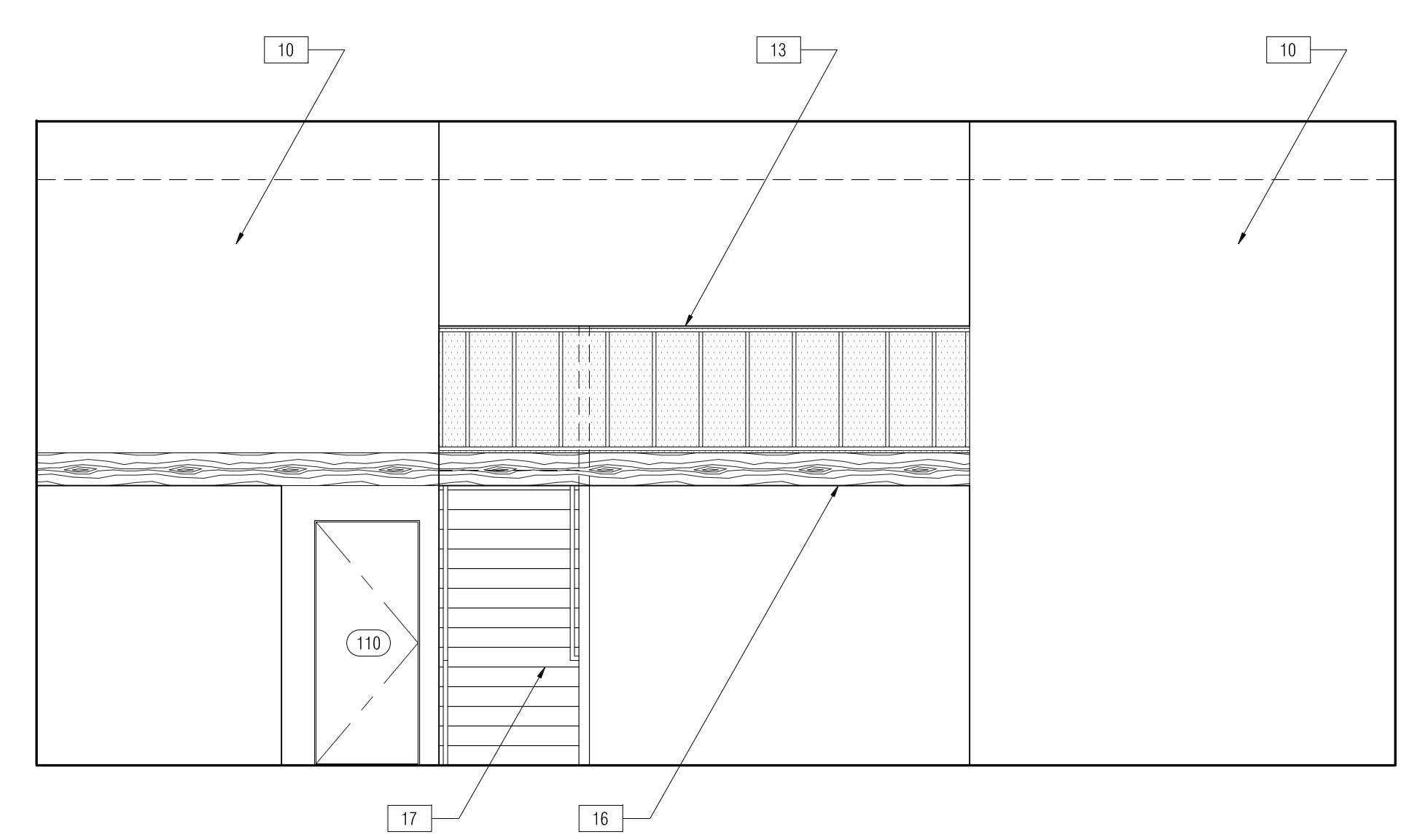
11 PRINTING AREA, CLOSETS & GREEN ROOM
1/4" = 1'-0"



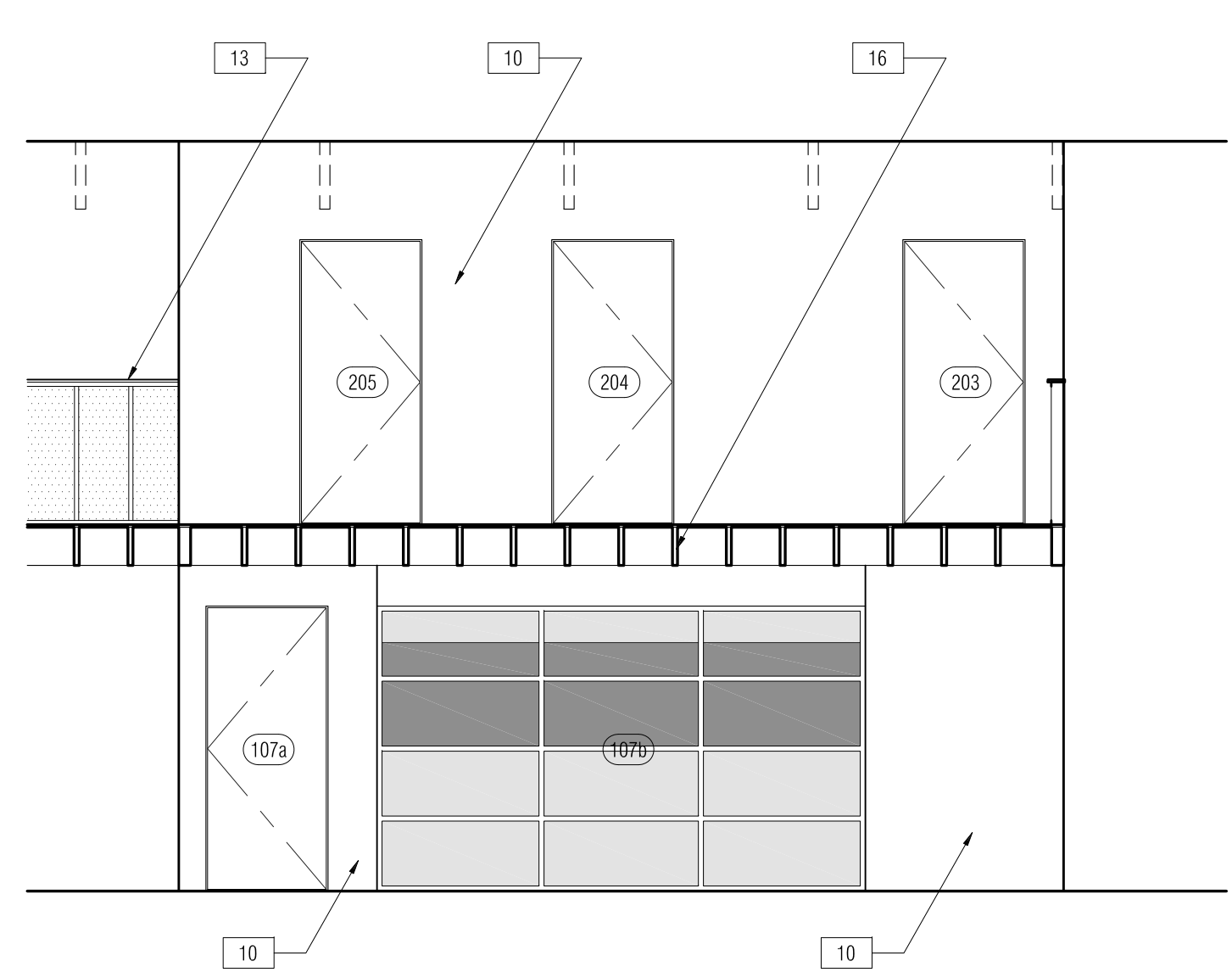
10 OFFICE NORTH TOWARD MEZZANINE SOUTH
1/4" = 1'-0"



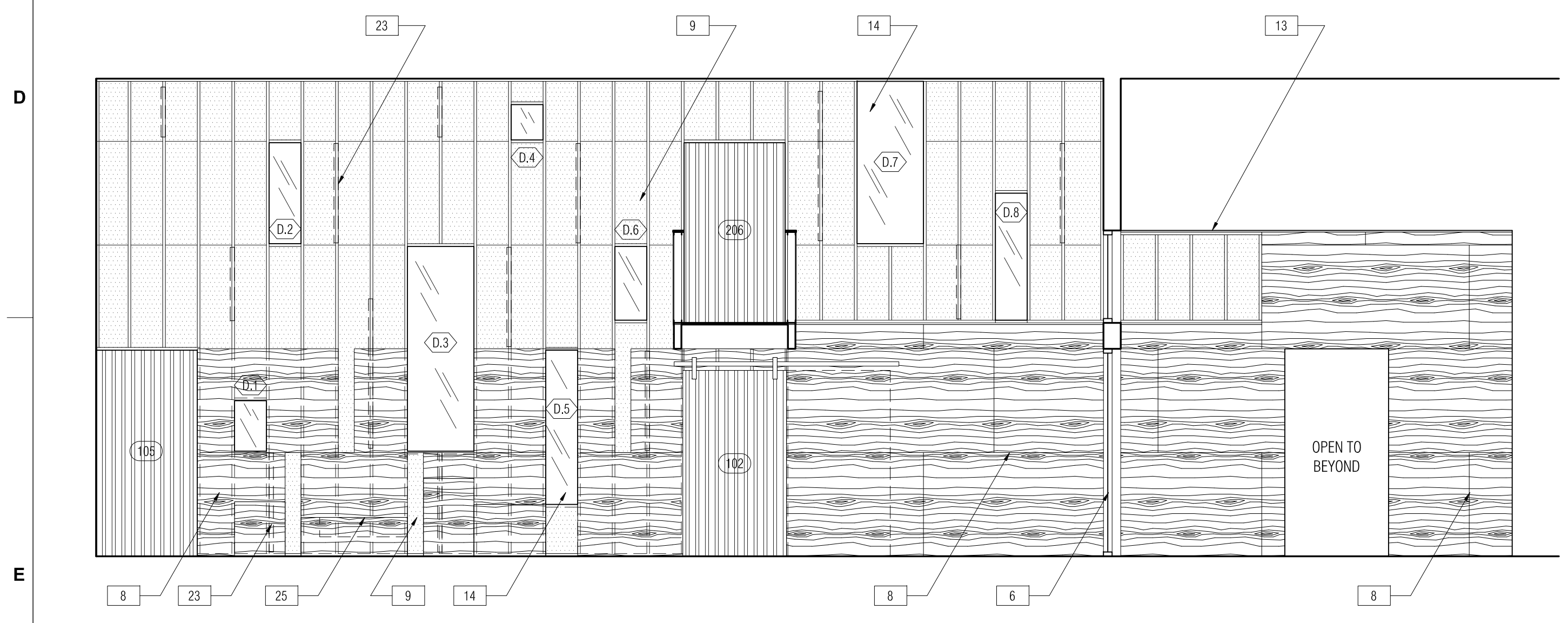
9 STAIRCASE
1/4" = 1'-0"



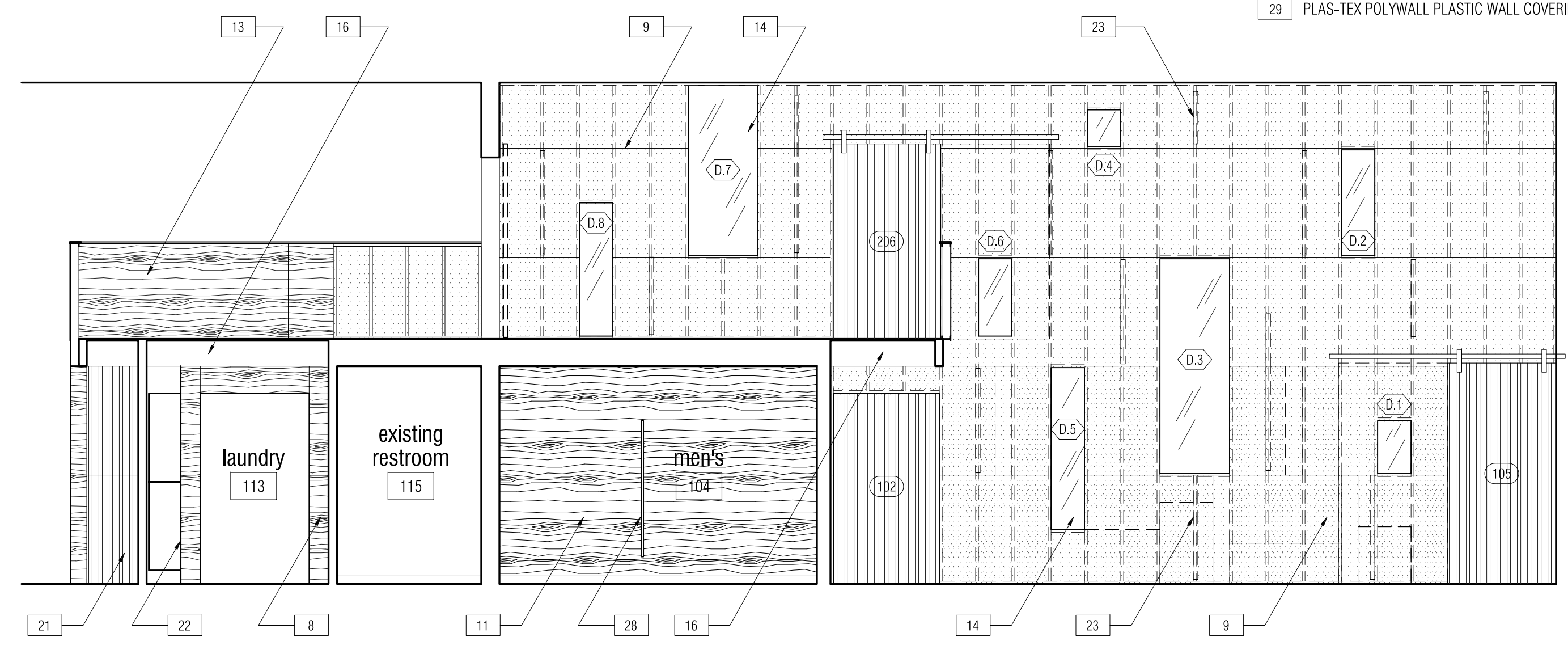
8 OFFICE SOUTH TOWARD MEZZANINE NORTH
1/4" = 1'-0"



7 CONFERENCE & MEZZANINE SOUTH
1/4" = 1'-0"



6 DIVIDER WALL FROM OFFICE
1/4" = 1'-0"



5 DIVIDER WALL FROM MULTIPURPOSE
1/4" = 1'-0"

interior elevation keynotes

- 1 EXISTING CMU OR STUD WALL TO REMAIN PTD., TYP.
- 2 EXISTING STEEL JOIST PTD., TYP.
- 3 EXISTING LOUVERED WINDOW W/ FAN TO REMAIN; CLEAN & REPAIR AS NECESSARY
- 4 NEW CLR. ANODIZED ALUM. LOW-E DUAL-GLAZED WINDOW TO REPLACE EXISTING LOUVER
- 5 NEW CLR. ANODIZED ALUM. STOREFRONT ENTRY LOW-E DUAL-GLAZED TO REPLACE EXIST. ROLL-UP DOOR
- 6 NEW CLR. ANODIZED ALUM. STOREFRONT TEMPERED SINGLE-GLAZED TO REPLACE EXIST. ROLL-UP DOOR W/ INFILL HEADER
- 7 NEW CLR. ANODIZED ALUM. WINDOW, SINGLE-GLAZED
- 8 5/8" X 4" X 8" ORIENTED STRAND BOARD W/ CLEAR MATTE VARNISH FINISH
- 9 10 MM BLUE POLYGL. FASTENED TO METAL STUDS ON ONE SIDE ONLY W/ SHEET METAL SCREWS
- 10 5/8" GYPSUM BOARD ON MTL. STUDS, PTD.
- 11 5/8" HIGH IMPACT MOISTURE RESISTANT GYPSUM BOARD ON MTL. STUDS, PTD.
- 12 1/4" F-3 WOOL FELT WALL COVERING OVER UNFINISHED GYP. BD. ON MTL. STUDS. <http://www.thefeltcompany.com>
- 13 10 MM BLUE POLYGL. FASTENED TO METAL STUDS BOTH SIDES W/ STAINED WOOD CAP, TYP. GUARDRAIL
- 14 1/4" CLEAR LEXAN PANEL FASTENED TO 2X WOOD FRAME, TYP. OF INTERIOR WINDOWS U.N.O.
- 15 3/4" WHITE MELAMINE MILLWORK, TYP.
- 16 EXPOSED WOOD FRAMING
- 17 2X WOOD STAIR STRINGERS, TREADS & RISERS
- 18 WOOD HANDRAIL ON PTD. STEEL BRACKETS
- 19 WHITE PLASTIC LAMINATE OVER PARTICLE BOARD W/ MATCHING EDGE BAND COUNTERTOP ON WHITE RAKKS TYPE 'EH' STEEL SUPPORTS, TYP.
- 20 3/4" PLYWOOD SHELVES W/ 1 1/2" WOOD NOSING, PTD., TYP. W/ S.S. ROD IF SHOWN
- 21 14 GA. HOT-ROLLED SHEET METAL W/ CLEAR WAX FINISH ADHERED TO 3/4" PLYWOOD
- 22 2-TIER 12" X 15" X 36" STEEL LOCKERS, HALLOWELL OR SIMILAR
- 23 LOW PROFILE COMPACT Z-STRIP FLUORESCENT LIGHT FIXTURE, LITHONIA LIGHTING OR SIMILAR
- 24 NEW EXTERIOR ENTRY DECK CONSISTS OF PT 2X6 WOOD DECKING & STAIRS ON PT WOOD FRAMING, 1X6 WOOD SLAT GUARDRAIL
- 25 SEATING MADE OF WOOD FRAMED BOXES FINISHED IN ORIENTED STRAND BOARD W/ CLEAR MATTE VARNISH
- 26 FABRIC CURTAIN ON S.S. ROD IN FRONT OF 3/4" PLYWOOD SHELVES W/ 1 1/2" WOOD NOSING, PTD., TYP.
- 27 SOLID SURFACE COUNTERTOP, WRAP DOWN SIDES
- 28 TOILET PARTITIONS, PTD. W/ BLACK CHALKBOARD PAINT
- 29 PLAS-TEX POLYWALL PLASTIC WALL COVERING

**REAL THREAD
WORLD
HEADQUARTERS**
400 PITTMAN STREET
ORLANDO, FL 32801

CLIENT / OWNER
**REAL THREAD
DRU DALTON**
407.479.7210

GENERAL CONTRACTOR
**THE HAGEDORN GROUP
CRAIG HAGEDORN**
407.366.8488

CUBE

CUBE design + research, LLC | 1/1 617.848.2602
30 Newland Street 4th Floor, Boston MA 02111 | www.cubedesignresearch.com

PERMIT SET	13.06.07
PRICING SET	13.04.12
DESIGN PROGRESS	13.03.22
ISSUE	DATE

NOT FOR CONSTRUCTION

SCALE
AS NOTED

DATE DRAWN
13.03.22

**OFFICE - INTERIOR
ELEVATIONS**

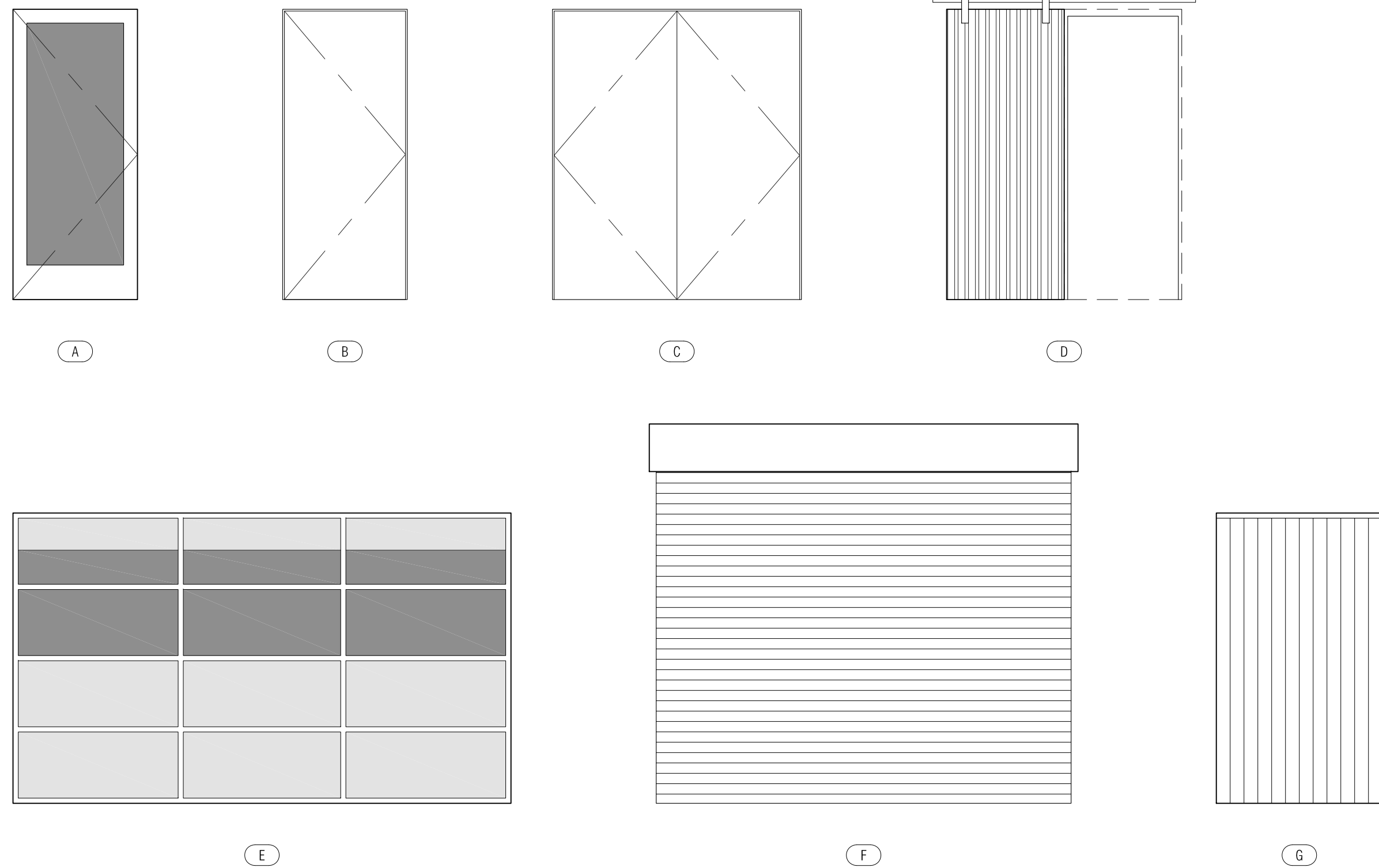
A4.2

DOOR SYMBOL	LOCATION	FIRE RATING	DOOR			FRAME		HARDWARE	NOTES
			SIZE [W x H x D]	MATERIAL	FINISH	TYPE	FINISH		
101	ENTRY/MULTIPURPOSE	-	3'-0" x 7'-0" x 1 3/4"	ALUM/GLASS	CLR ANOD	A	ALUM	CLR ANOD	ALUMINUM STOREFRONT SYSTEM, CLEAR ANODIZED W/ 1" TEMPERED INSULATED LOW-E DUAL GLAZING
102	-	-	-	-	-	-	-	-	-
103	WOMEN'S RESTROOM	-	3'-0" x 7'-0" x 1 3/4"	HARDBOARD	PAINTED	B	WOOD	PAINTED	SOLID CORE
104	MEN'S RESTROOM	-	3'-0" x 7'-0" x 1 3/4"	HARDBOARD	PAINTED	B	WOOD	PAINTED	SOLID CORE
105	BREAKROOM	-	4'-0" x 8'-0" x 1 5/8"	STEEL	EXPOSED	D	-	-	2 LAYERS 3/4" PLYWOOD CLAD IN 14 GA. HOT-ROLLED STEEL, SEE DETAILS 1 & 2/A4.1
106a	OFFICE NORTH	-	3'-0" x 7'-0" x 1 3/4"	ALUM/GLASS	CLR ANOD	A	ALUM	CLR ANOD	ALUMINUM STOREFRONT SYSTEM, CLEAR ANODIZED W/ 1" TEMPERED INSULATED DUAL GLAZING
106b	OFFICE NORTH	90 MIN.	6'-0" x 7'-0" x 1 3/4"	HARDBOARD	PAINTED	C	WOOD	PAINTED	SOLID CORE
107a	CONFERENCE	-	3'-0" x 7'-0" x 1 3/4"	HARDBOARD	PAINTED	B	WOOD	PAINTED	SOLID CORE
107b	CONFERENCE	-	12'-0" x 7'-0"	ALUM/GLASS	CLR ANOD	E	-	-	ALUMINUM OVERHEAD GARAGE DOOR W/ CLEAR TEMPERED GLASS
108	CLOSET	-	3'-0" x 7'-0" x 1 3/4"	HARDBOARD	PAINTED	B	WOOD	PAINTED	SOLID CORE
109	PRINTING CLOSET	-	3'-0" x 7'-0" x 1 3/4"	HARDBOARD	PAINTED	B	WOOD	PAINTED	SOLID CORE
110	CLOSET	-	3'-0" x 7'-0" x 1 3/4"	HARDBOARD	PAINTED	B	WOOD	PAINTED	SOLID CORE
111a	STORAGE	-	6'-0" x 7'-0" x 1 3/4"	HARDBOARD	PAINTED	C	WOOD	PAINTED	EXISTING TO REMAIN
111b	STORAGE	-	8'-0" x 9'-0"	METAL	PAINTED	F	-	-	EXISTING ROLL-UP DOOR TO REMAIN
112	OFFICE SOUTH	-	3'-0" x 7'-0" x 1 3/4"	ALUM/GLASS	CLR ANOD	A	ALUM	CLR ANOD	ALUMINUM STOREFRONT SYSTEM, CLEAR ANODIZED W/ 1" TEMPERED INSULATED DUAL GLAZING
113	LAUNDRY	-	3'-0" x 6'-8" x 1 3/4"	METAL	PAINTED	B	METAL	PAINTED	EXISTING EXTERIOR EXIT DOOR TO REMAIN
114	EXISTING RESTROOM	-	3'-0" x 7'-0" x 1 3/4"	HARDBOARD	PAINTED	B	WOOD	PAINTED	SOLID CORE
115	EXISTING RESTROOM	-	3'-0" x 7'-0" x 1 3/4"	HARDBOARD	PAINTED	B	WOOD	PAINTED	SOLID CORE
116a	PRODUCTION	-	3'-0" x 6'-8" x 1 3/4"	METAL	PAINTED	B	METAL	PAINTED	EXISTING EXTERIOR EXIT DOOR TO BE REVERSED TO SWING OUT
116b	PRODUCTION	-	12'-0" x 10'-0"	METAL	PAINTED	F	-	-	EXISTING ROLL-UP DOOR TO REMAIN
116c	PRODUCTION	-	10'-0" x 10'-0"	METAL	PAINTED	F	-	-	EXISTING ROLL-UP DOOR TO REMAIN
116d	PRODUCTION	-	3'-0" x 7'-0" x 1 3/4"	HARDBOARD	PAINTED	B	WOOD	PAINTED	SOLID CORE
117	SEWING	-	4'-0" x 7'-0"	PVC	CLEAR	G	WOOD	PAINTED	8" PVC STRIP DOOR W/ 50% OVERLAP
118	STORAGE	-	-	-	-	-	-	-	8" PVC STRIP DOOR W/ 50% OVERLAP
119	MIXING	-	5'-0" x 7'-0"	PVC	CLEAR	G	WOOD	PAINTED	8" PVC STRIP DOOR W/ 50% OVERLAP
120	SCREEN PREP	-	4'-0" x 7'-0"	PVC	CLEAR	G	WOOD	PAINTED	8" PVC STRIP DOOR W/ 50% OVERLAP
121	WASHOUT	-	4'-0" x 7'-0"	PVC	CLEAR	G	WOOD	PAINTED	8" PVC STRIP DOOR W/ 50% OVERLAP
122a	EXPOSURE	-	4'-0" x 7'-0"	PVC	CLEAR	G	WOOD	PAINTED	8" PVC STRIP DOOR W/ 50% OVERLAP
122b	EXPOSURE	-	5'-0" x 7'-0"	PVC	CLEAR	G	WOOD	PAINTED	8" PVC STRIP DOOR W/ 50% OVERLAP
123	SCREEN STORAGE	-	4'-0" x 7'-0"	PVC	CLEAR	G	WOOD	PAINTED	8" PVC STRIP DOOR W/ 50% OVERLAP
124	WET SCREEN & COATING	-	4'-0" x 7'-0"	PVC	CLEAR	G	WOOD	PAINTED	8" PVC STRIP DOOR W/ 50% OVERLAP
125a	DETAPE & RECLAIM	-	5'-0" x 7'-0"	PVC	CLEAR	G	WOOD	PAINTED	8" PVC STRIP DOOR W/ 50% OVERLAP
125b	DETAPE & RECLAIM	-	3'-0" x 6'-8" x 1 3/4"	METAL	PAINTED	B	METAL	PAINTED	EXISTING EXTERIOR EXIT DOOR TO REMAIN
202	PHOTOGRAPHY	-	3'-2" x 7'-2" x 1 5/8"	STEEL	EXPOSED	D	-	-	2 LAYERS 3/4" PLYWOOD CLAD IN 14 GA. HOT-ROLLED STEEL, SEE DETAILS 1 & 2/A4.1
203	MEETING	-	3'-0" x 7'-0" x 1 3/4"	HARDBOARD	PAINTED	B	WOOD	PAINTED	SOLID CORE
204	STORAGE	-	3'-0" x 7'-0" x 1 3/4"	HARDBOARD	PAINTED	B	WOOD	PAINTED	SOLID CORE
205	MEETING	-	3'-0" x 7'-0" x 1 3/4"	HARDBOARD	PAINTED	B	WOOD	PAINTED	SOLID CORE
206	MEZZANINE NORTH	-	3'-7 3/4" x 7'-2" x 1 3/4"	HARDBOARD	PAINTED	B	WOOD	PAINTED	SOLID CORE
207	MEZZANINE EAST	-	3'-0" x 7'-2" x 1 5/8"	STEEL	EXPOSED	D	-	-	2 LAYERS 3/4" PLYWOOD CLAD IN 14 GA. HOT-ROLLED STEEL, SEE DETAILS 1 & 2/A4.1

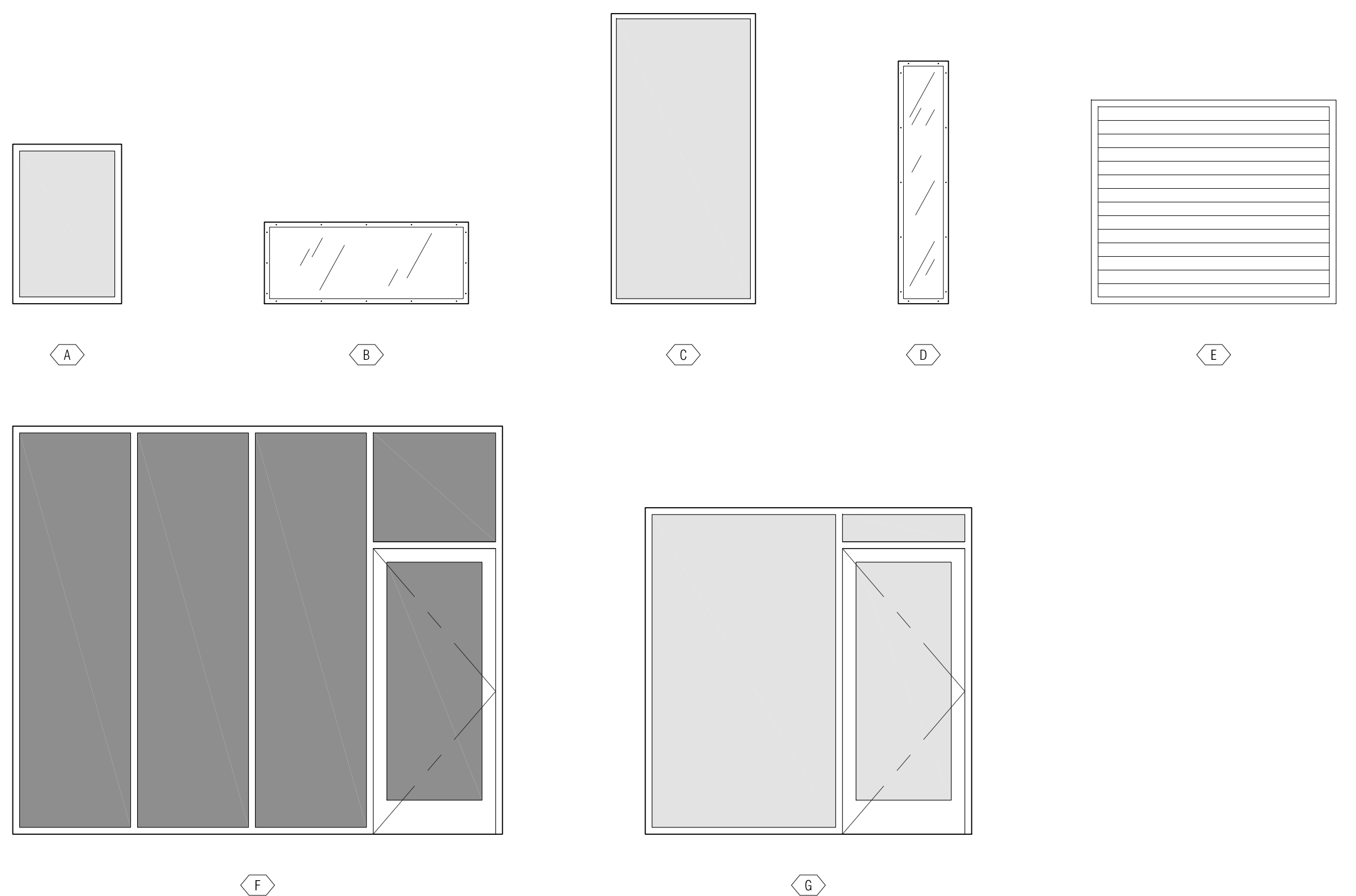
2 DOOR SCHEDULE
N.T.S.

WINDOW SYMBOL	LOCATION	ROUGH OPENING [W x H]	TYPE	FRAME		GLAZING		TEMPERED	NOTES
				MATERIAL	FINISH	TYPE	FINISH		
A.1	OFFICE / PRODUCTION	4'-10" x 3'-6"	A	ALUM	CLR ANOD	SINGLE	CLEAR		INTERIOR WINDOW THERMALLY BROKEN NOT REQUIRED
A.2	OFFICE / PRODUCTION	2'-0" x 2'-0"	A	ALUM	CLR ANOD	SINGLE	CLEAR		INTERIOR WINDOW THERMALLY BROKEN NOT REQUIRED
A.3	OFFICE / PRODUCTION	1'-4" x 4'-6"	A	ALUM	CLR ANOD	SINGLE	CLEAR		INTERIOR WINDOW THERMALLY BROKEN NOT REQUIRED
A.4	OFFICE / PRODUCTION	1'-0" x 1'-0"	A	ALUM	CLR ANOD	SINGLE	CLEAR		INTERIOR WINDOW THERMALLY BROKEN NOT REQUIRED
A.5	OFFICE / PRODUCTION	2'-8" x 1'-4"	A	ALUM	CLR ANOD	SINGLE	CLEAR		INTERIOR WINDOW THERMALLY BROKEN NOT REQUIRED
A.6	MEETING / PRODUCTION	1'-4" x 2'-0"	A	ALUM	CLR ANOD	SINGLE	CLEAR		INTERIOR WINDOW THERMALLY BROKEN NOT REQUIRED
A.7	CONFERENCE / PRODUCTION	8'-0" x 2'-8"	A	ALUM	CLR ANOD	SINGLE	CLEAR		INTERIOR WINDOW THERMALLY BROKEN NOT REQUIRED
A.8	CONFERENCE / PRODUCTION	4'-0" x 2'-8"	A	ALUM	CLR ANOD	SINGLE	CLEAR		INTERIOR WINDOW THERMALLY BROKEN NOT REQUIRED
A.9	MEETING / PRODUCTION	4'-8" x 2'-0"	A	ALUM	CLR ANOD	SINGLE	CLEAR		INTERIOR WINDOW THERMALLY BROKEN NOT REQUIRED
B.1	PHOTOGRAPHY	5'-0" x 2'-0"	B	WOOD	EXPOSED	POLYCARB.	CLEAR		
C.1	CLOSETS	3'-6 1/2" x 8'-0"	C	ALUM	CLR ANOD	DUAL	CLEAR	YES	INTERIOR WINDOW THERMALLY BROKEN NOT REQUIRED
D.1	MULTIPURPOSE / OFFICE	1'-2 3/4" x 1'-11 3/8"	D	WOOD	EXPOSED	POLYCARB.	CLEAR		
D.2	MULTIPURPOSE / OFFICE	1'-2 3/4" x 3'-10 3/4"	D	WOOD	EXPOSED	POLYCARB.	CLEAR		
D.3	MULTIPURPOSE / OFFICE	2'-6 3/4" x 7'-10 3/4"	D	WOOD	EXPOSED	POLYCARB.	CLEAR		
D.4	MULTIPURPOSE / OFFICE	1'-2 3/4" x 1'-4 3/8"	D	WOOD	EXPOSED	POLYCARB.	CLEAR		
D.5	MULTIPURPOSE / OFFICE	1'-2 3/4" x 5'-11 3/8"	D	WOOD	EXPOSED	POLYCARB.	CLEAR		
D.6	MULTIPURPOSE / OFFICE	1'-2 3/4" x 2'-10 1/8"	D	WOOD	EXPOSED	POLYCARB.	CLEAR		
D.7	MULTIPURPOSE / OFFICE	2'-6 3/4" x 6'-3 1/8"	D	WOOD	EXPOSED	POLYCARB.	CLEAR		
D.8	MULTIPURPOSE / OFFICE	1'-2 3/4" x 4'-10 3/4"	D	WOOD	EXPOSED	POLYCARB.	CLEAR		
X.1	ENTRY/MULTIPURPOSE	12'-0" x 10'-0"	F	ALUM	CLR ANOD	DUAL	CLR, LOW-E	YES	THERMALLY BROKEN ALUMINUM STOREFRONT SYSTEM TO REPLACE EXISTING ROLL-UP DOOR
X.2	MULTIPURPOSE	3'-8" x 3'-8"	A	ALUM	CLR ANOD	DUAL	CLR, LOW-E		THERMALLY BROKEN EXTERIOR WINDOW TO REPLACE EXISTING JALOUSIE WINDOW
X.3	OFFICE SOUTH	4'-4" x 4'-4"	A	ALUM	CLR ANOD	DUAL	CLR, LOW-E		THERMALLY BROKEN EXTERIOR WINDOW TO REPLACE EXISTING JALOUSIE WINDOW
X.4	PRODUCTION	5'-0" x 5'-0"	E						EXISTING JALOUSIE WINDOW WITH EXHAUST FAN TO REMAIN, CLEAN AND REPAIR AS NECESSARY
X.5	PRODUCTION	5'-0" x 5'-0"	E						EXISTING JALOUSIE WINDOW WITH EXHAUST FAN TO REMAIN, UNBLOCK, CLEAN & REPAIR AS NECESSARY
X.6	PRODUCTION	2'-0" x 2'-0"	E						EXISTING JALOUSIE WINDOW TO REMAIN, CLEAN AND REPAIR AS NECESSARY
X.7	PRODUCTION	2'-0" x 2'-0"	E						EXISTING JALOUSIE WINDOW TO REMAIN, UNBLOCK, CLEAN AND REPAIR AS NECESSARY
X.8	PRODUCTION	1'-4" x 2'-0"	A	ALUM	CLR ANOD	DUAL	CLR, LOW-E		THERMALLY BROKEN CASEMENT EXTERIOR WINDOW TO REPLACE EXISTING JALOUSIE WINDOW
X.9	OFFICE / PRODUCTION	8'-0" x 8'-0"	G	ALUM	CLR ANOD	DUAL	CLEAR	YES	NON-THERMALLY BROKEN ALUMINUM STOREFRONT SYSTEM TO REPLACE EXISTING ROLL-UP DOOR
X.10	OFFICE / PRODUCTION	8'-0" x 8'-0"	G	ALUM	CLR ANOD	DUAL	CLEAR	YES	NON-THERMALLY BROKEN ALUMINUM STOREFRONT SYSTEM TO REPLACE EXISTING ROLL-UP DOOR
SKY1	OFFICE / PRODUCTION	5'-0" x 6'-0"	-	ALUM	CLR ANOD	DUAL / POLY	CLR / WHITE		CLASS A/CC1 FLAME RATING, HIGH VELOCITY HURRICANE ZONE APPROVED SKYLIGHT FROM SUNOPTICS

1 WINDOW SCHEDULE
N.T.S.



4 DOOR TYPES
N.T.S.



3 WINDOW TYPES
N.T.S.