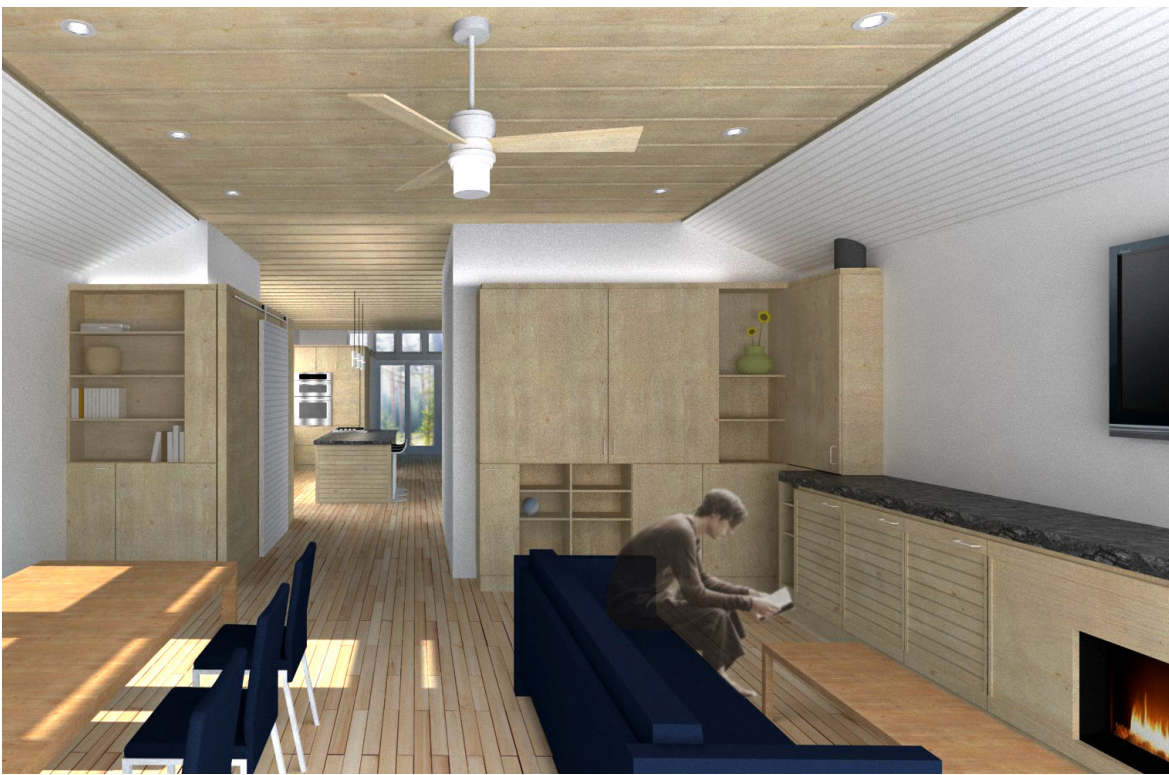


CUBE

FORT ERIE LAKE HOUSE



LOCATION

Fort Erie, Ontario, Canada

CLIENT

Lisbeth Alpern + Walter Kuhn

STATS

3,500 sf

COLLABORATORS

Scott Aquilina & Nick Brown
Sider Brother Builders

The project began as the completion of construction documents for a pre-existing design by another architect, but evolved into construction administration and interior design services. The thin 16-foot wide beach cottage contains spaces that are arranged linearly and squeezed onto an equally narrow site. The design connects the beach to the heavily vegetated yard through a simple palette of materials that creates an uninterrupted flow throughout the interior spaces of the home. Working in conjunction with the cabinetry, a row of transom windows delivers light deep into the spaces and maintains visual continuity through the linear house connecting the lake to the backyard beyond.

