

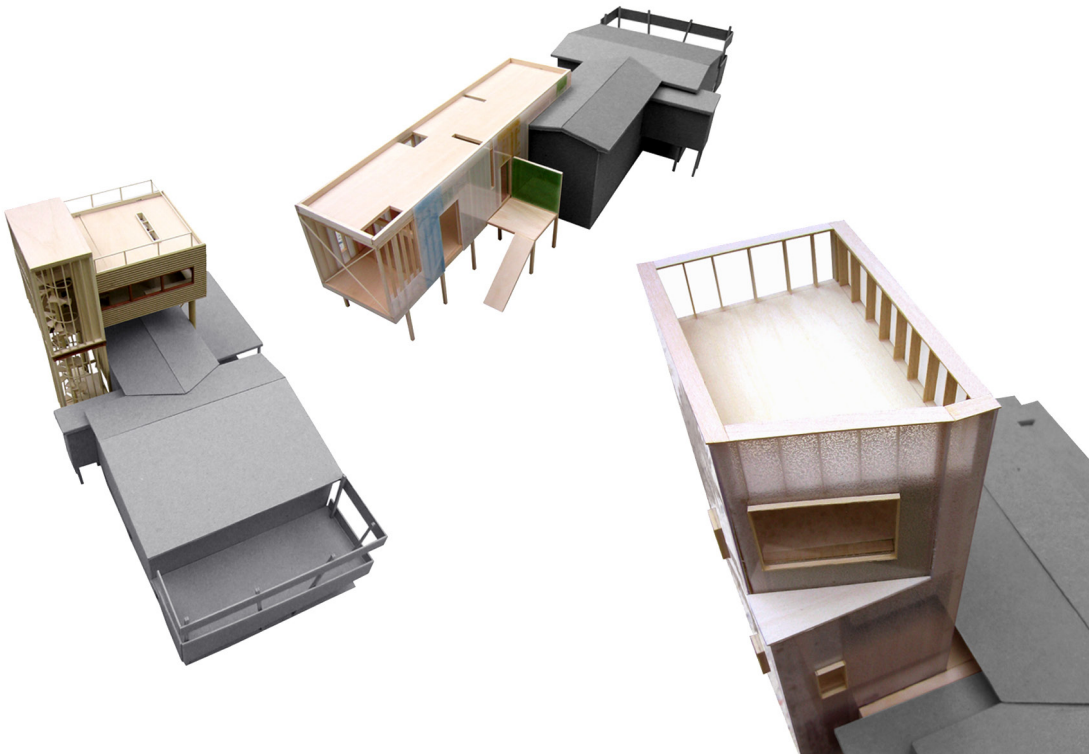
C U B E

C A R S O N P R O J E C T

LOCATION
Folly Beach, South Carolina

CLIENT
David Carson

STATS
600 - 800 sf



The project consists of an addition to a two-story beach bungalow. The property includes dense tropical vegetation in rear and obstructed views to the Atlantic Ocean in front. The objective was to add 600-800sf of live/work space for a graphic designer. Using the client's work as a catalyst for design inquiry, three design options exploring notions of privacy, exposure, and process were developed. The three schemes are treated as typologies that reveal the activities of living and working through transparent, semi-transparent, and opaque materials.

